

CHARTPLOTTER CONTROLLER



Seiwa Explorer MKIII Chart Controller

The award winning Seiwa Explorer MKIII chart controller is one of the most cost effective ways of obtaining a large screen chart plotter. The full system consists of the chart controller, a high quality VGA monitor, Seiwa GPS antenna and a C-Map Max Chart, all items are available separately or as an attractive package price.

The Explorer can be mounted up to 6ft away from the display and is available with a choice of 12V (or 24 volt with converter) high quality 15", 17" and 19" glass fronted monitors, all with excellent viewing angles and brilliance suitable for use in most wheel houses.

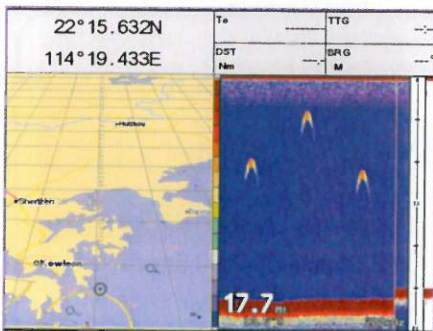
Easy to Use

Users can easily place marks on screen to represent waypoints, wrecks, pots, hazards etc and create routes at a touch of a button. Simply position the cursor over the objects on the chart to get detailed information on wrecks, marinas, tidal height, buoys etc. Tracking can easily be switched on and off and copies of user data can be backed up to low cost user cards.

With a large screen there is less need for scrolling and zooming, and virtually no need to change the level of detail. You can have high levels of detail for easier navigation without the screen being cluttered.



Seiwa Black Box Fishfinder Compatible



Turn your Seiwa into a powerful 600W dual frequency fishfinder by adding the Seiwa Black Box Fishfinder. View split screen chartplotter / fishfinder or whole screen chartplotter or fishfinder. For further details see page 24.

- Ideal for commercial Use
- Chart controller available separately
- 10,000 Waypoints / Marks
- 50 Routes, 5 Tracks / 5000 track points
- 2 x C-Map Slots
- Various packages available

Wide Choice of Screen Displays

Either view split screen, full screen or multi screen displays. Screen choices are increased with the addition of Seiwa Fishfinder and Radar.

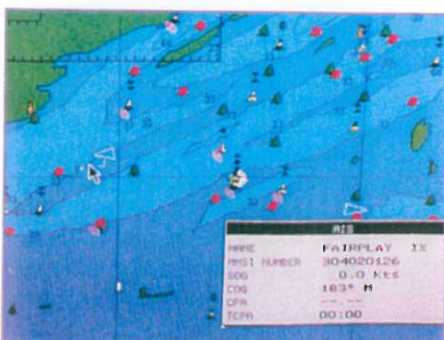
User Definable Keys and Tool Bar

Users can easily programme the 4 soft keys at the top of the Explorer chart controller. Choose from the drop down menu your most commonly used functions, and access them with one touch of a button. The data display window can be turned either off or on with a choice of 5 or 8 data boxes. Choose from the drop down menu to view the data you would like to see displayed e.g. COG, BRG, XTE, Scale, etc.

Seiwa Radar Compatible

Connect to a Seiwa Black Box Radar for the ultimate navigation system. When connected to a suitable electronic compass input (eg Koden KGC-1) you can overlay the radar image on top of your electronic charts. This helps identify buoys, targets and land on the radar.

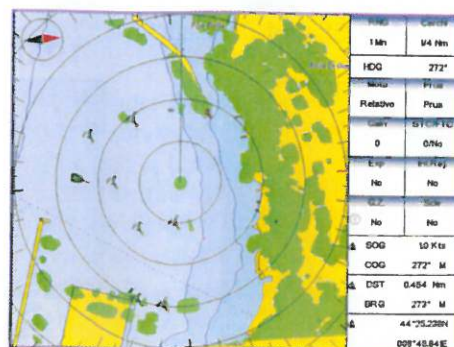
AIS Compatible



Vessels details with AIS option

Enhance your safety and collision avoidance with the addition of an AIS module.

For further details see pages 19 and 20.

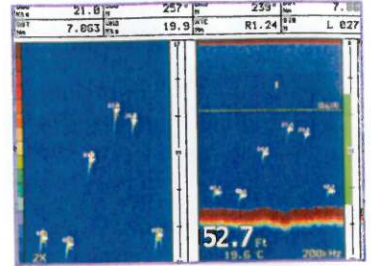


Radar with Chart Overlay when connected to an electronic compass input

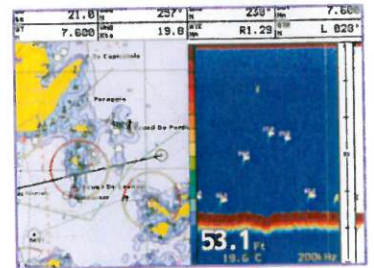
Seiwa Black Box Fishfinder, GPS & Seiwa Radar

Seiwa Black Box Fishfinder

Turn your Seiwa into a powerful 600 watt, dual frequency 50/200kHz Fishfinder by adding the Seiwa Black Box Fishfinder. Select full screen or split screen chart and Fishfinder displays with fish and bottom echoes shown in real time. The sounder is simple to use with automatic or manual range, gain, frequency and shift options. The image processing circuit features interference rejection, a noise filter and a STC function to reduce or eliminate surface clutter, resulting in a superb picture. Any part of the echo image can be magnified by x2, x4 or any user selected range.



200kHz fishfinder with 2 x Zoom on left



Split screen chartplotter and 200kHz fish finder



Transducer options, bronze or plastic through hull

- Dual frequency 50/200kHz
- Bottom lock magnification and white line
- Shallow, depth, fish and temperature alarms
- A-Scope display option
- NMEA Depth output
- Through hull or transom mount transducer option



Seiwa Smart GPS Antenna

The WAAS/EGNOS ready GPS antenna can provides position, speed and course information via NMEA 0183 data and is suitable for use with chartplotters and PC's. The position is accurate to within 3 meters when in WAAS/EGNOS coverage.

- Easy installation – plug & play
- 16 Parallel Channels
- 10-35 Vdc
- WAAS/EGNOS ready
- Supplied with 15m cable
- Option for Seiwa Explorer

Seiwa Black Box Radar

Connect to a Seiwa Black Box Radar for the ultimate all-in-one system for safe navigation in all situations and weather. When connected to a suitable electronic compass input you can overlay the radar image on top of your electronic charts. This helps to easily identify buoys, targets and land on the radar and enhances the users safety.

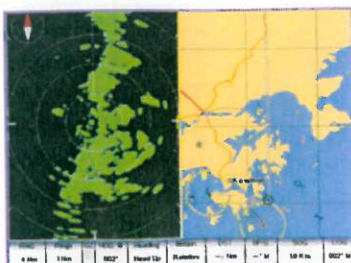
- SWR1 2kW, 24NM, 11" Radome
- SWR8 2kW, 24NM, 18" Radome
- SWR9 4kW, 36NM, 22" Radome
- SWR10 4kW, 48NM 3.5ft or 4.5ft scanner



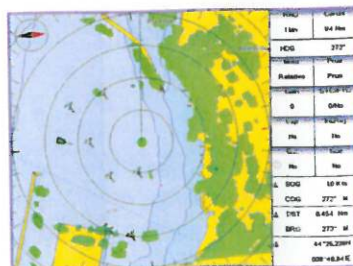
SWR-10



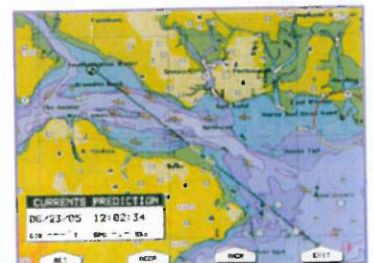
SWR-8



Split screen radar and chartplotter



Radar with chart overlay



Full screen chart